

# REACKON



- **Reackon Concretes Pvt. Ltd.** A **CRISIL** accredited company with **ISO 9001:2015** certification established in 2004 engaged in Manufacturing of Ready Mix Concrete and Innovative Precast Concrete Products also engaged in Manufacturing of Premium Quality P.V.C. Moulds for precast concrete products which stand to its excellence in performance and durability.
- We emerged as leading manufacturer and exporter of P.V.C. Moulds for Precast concrete products because of its Quality, Durability and Performance with elegant designs.
- We are facilitated with highly automated machines to cater the requirements of our valued Customers across India and Abroad.
- With the **state of Art Technology** our team of technocrats is striving to develop the series of new designs & range of new products. We hold an immense expertise in range and designs with brilliant and excellent aesthetic appeal. We are competent enough to cater the customized requirement under precision conditions with dimensional accuracy and consistent finishing through **100% clear Virgin Raw Material**.

# Quality Assurance



- We being Quality conscious always endeavor to excel in quality standards. We use high grade **100% clear virgin raw material**. Each of our products is confirming to all Quality Standards and meeting all the parameters for ultimate performance. We believe in high business ethical values and commitment.
- Company established in 2004 with perception of development and to create a benchmark in construction activities Industry by maintaining **QUALITY, SPEED** and **SERVICES** with most advanced Hi-tech Technology with super mechanized system and Innovative concepts to lead the market.
- As concept of **Ready Mix Concrete technology** is widely accepted worldwide because of its endless advantages. We took Initiative with broad vision made as Pioneer in establishment of **First Ready Mix Concrete plant in Central India** at Nagpur to enhance quality, speed and services of construction activities and infrastructural growth taking place in and around city.
- **Technocrats** are also engaged in designing and developing the wide range of **Innovative concrete & pvc products**, which are cost effective, maintenance free and environmental friendly and stands better replacement for conventional products. Which are manufactured under precision conditions through **automated and Hi-Tech Machines**.



# Quality Assurance



- With the aim to achieve and exceed customer expectations our team strives for continuous improvement in our systems of services and quality control by adopting modern technology and enhancing competence of our people. We are committed to improve the quality of our products through Hi- Tech technology & up-gradation and services.
- The products developed by the company has its own designs and patterns, which lead to market by its Quality and performance in operation, the market reach of Reackon products extends to every corner of the county. Reackon brand has established a formidable credibility and is associated with high quality, state of the art technology and exemplary services.
- Looking towards to maintain the flagship in market our Team of Technocrats also given the emphasis on appearance, Aesthetic view, Strength and Economical range to our products which are Eco-friendly too.

# Why Do We Need to Maintain Clear Cover in RCC?

- To protect the steel reinforcement bar(rebar) from environmental effects to prevent their corrosion.
- To provide thermal insulation, which protects the rebar from fire.
- To give rebar sufficient embedding to enable them to be stressed without slipping.

# What are cover Blocks

- A cover block is essentially a spacer that is used to lift the rebar matrix off the ground so that concrete may flow underneath the rebar. In order to prevent corrosion of the rebar, provide better reinforcement and fire resistance to the rebar. It needs to be fully encased in concrete. It usually needs about 2 to 3 inches of coverage on all sides.
- Types Of Cover Block
- Concrete Cover Blocks / Plastic Cover Blocks



# What is the definition of cover block use in construction?



- A **cover block** is essentially a **spacer** that is used to lift the rebar matrix off the ground so that concrete may flow underneath the rebar.
- **Spacer** positioning is based primarily on acceptable deflection at maximum loading. Therefore, thinner rebars require more spacers than larger diameter rebars. While doing **RCC work** it is important to embed the steel in the concrete (also known as cover) so that the **rebar doesn't corrode** and to provide **fire protection** to the rebar. If we don't provide the recommended cover the rebar will corrode with time and will ultimately result in premature failure of the structure. Thus using cover blocks enhances the life of the structure significantly without adding much to the cost.

# Click to add title



- A cover block is essentially a spacer that is used to lift the rebar matrix off the ground so that concrete may flow underneath the rebar. In order to prevent corrosion of the rebar, provide better reinforcement and fire resistance to the rebar. It needs to be fully encased in concrete. It usually needs about 2 to 3 inches of coverage on all sides.

# What should be The Sizes Of cover Blocks

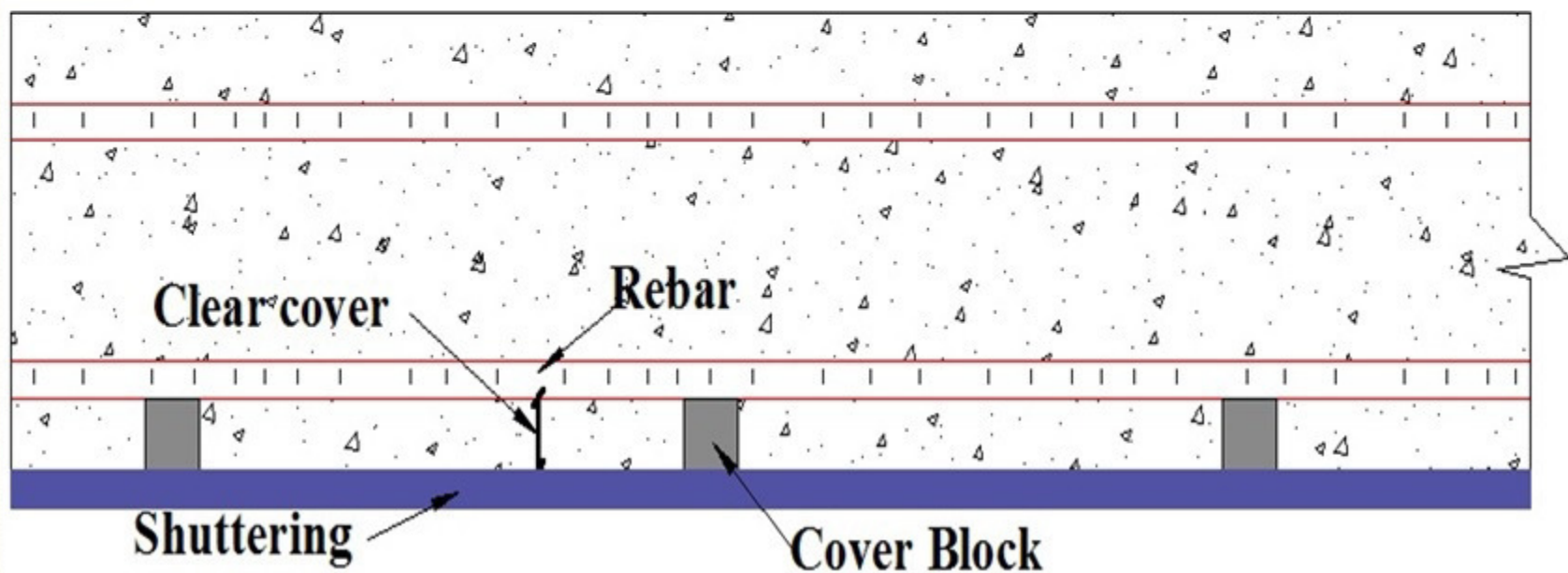


- The Thickness of cover depends on environmental conditions and type of structural member.
- What is Cover for reinforcement?
- Concrete Cover in reinforced concrete , is the least distance between the surface of embedded reinforcement and the outer surface of the concrete. The concrete cover depth can be measured with a cover meter.



# What is clear cover for Reinforcement in R.C.C work?

Cover blocks are used to maintain aforesaid clear cover between rebar & shuttering in R.C.C work as indicated in the drawings



# **What is in International Standard about cover block?**



- **In accordance with BS8110-1**
- **Concrete spacer (Cover Block) made on the construction site should not be used.**



## Site made Cover Block comply the technical requirements?



- Not **uniform** in size, shape & thickness.
- Possibility to **displacement** at the time of concreting for irregular size, shape & thickness.
- Site made mortar blocks are usually **porous**.
- Site made mortar blocks are not the same **quality** of concrete.
- Naturally, site made cover block does not comply the **technical** requirements.

# Site made cover block





# practical use of site made Cover Block at construction site.





# Concrete cover block



Click to add text

**Site made cover block.    Reackon concrete cover block.**





# Result of Not using cover block / site made cover blocks.



If we don't provide the proper clear cover, rebar will corrode with time and will ultimately result in premature failure of the structure...









# **Reackon Cover Block**

- **Reackon Cover Blocks are manufactured under precision condition with fiber reinforced M 40-60 concrete**

# Reackon Cover Block



Specification	Reackon cover blocks
Clear cover maintain	100%
Compressive strength	More than surrounding concrete.
Water absorption	Less than surrounding concrete
Shape	Uniformed shape. Have uniform grip to bear rebar , which protects rebar from displacement while concreting.
Possibility to displacement at the time of concreting	No
Create bond area	Better
Curing	Well cured



# **Benefit of Reackon Cover Blocks & Spacers**



- It is only possible to keep the distance between rods and shuttering in RCC by the use of REACKON COVER BLOCK.
- The rebars get embedded in the concrete properly restricting the chance of the rebars to be exposed to environmental effects of corroding and rusting.
- Properly embedded rebars with their straightness and curves as per drawing is maintained by the REACKON COVER BLOCK enabling the rebars to sustain designed load.

# Features

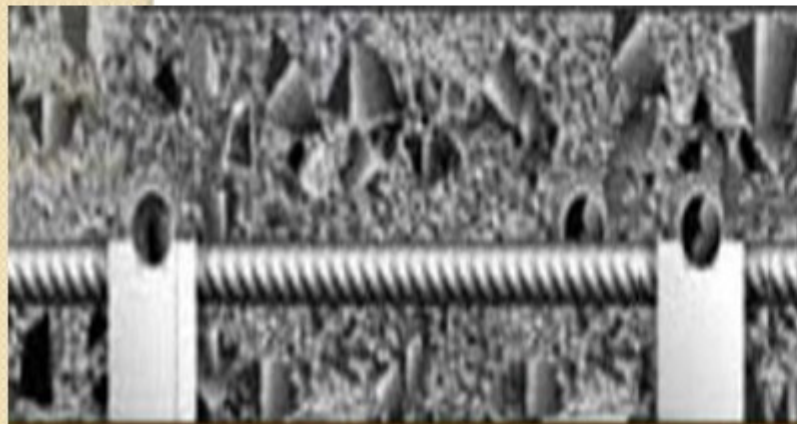
- Made of high quality concrete elements.
- Uniform size & shape.
- Cast in precision mould to ensure the accurate dimension.
- High compressive strength (6000 psi to 8000 psi)
- Having uniform grip, it mightn't displace while concrete casting.
- Low water absorption.
- Labour cost savings due to rapid and simple rebar laying operation.
- Cost effective.
- No wastage.
- Ready to use.



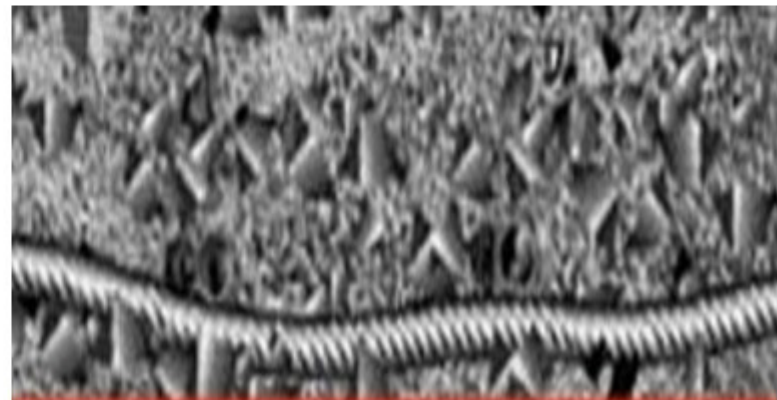
# Why do we need Reackon cover block?



Without using uniform shaped cover block the rebar used in concrete gets cracked and the rebar can not take the design load resulting premature failure of the structure.



Reinforcement with uniform cover blocks



Reinforcement without uniform cover block

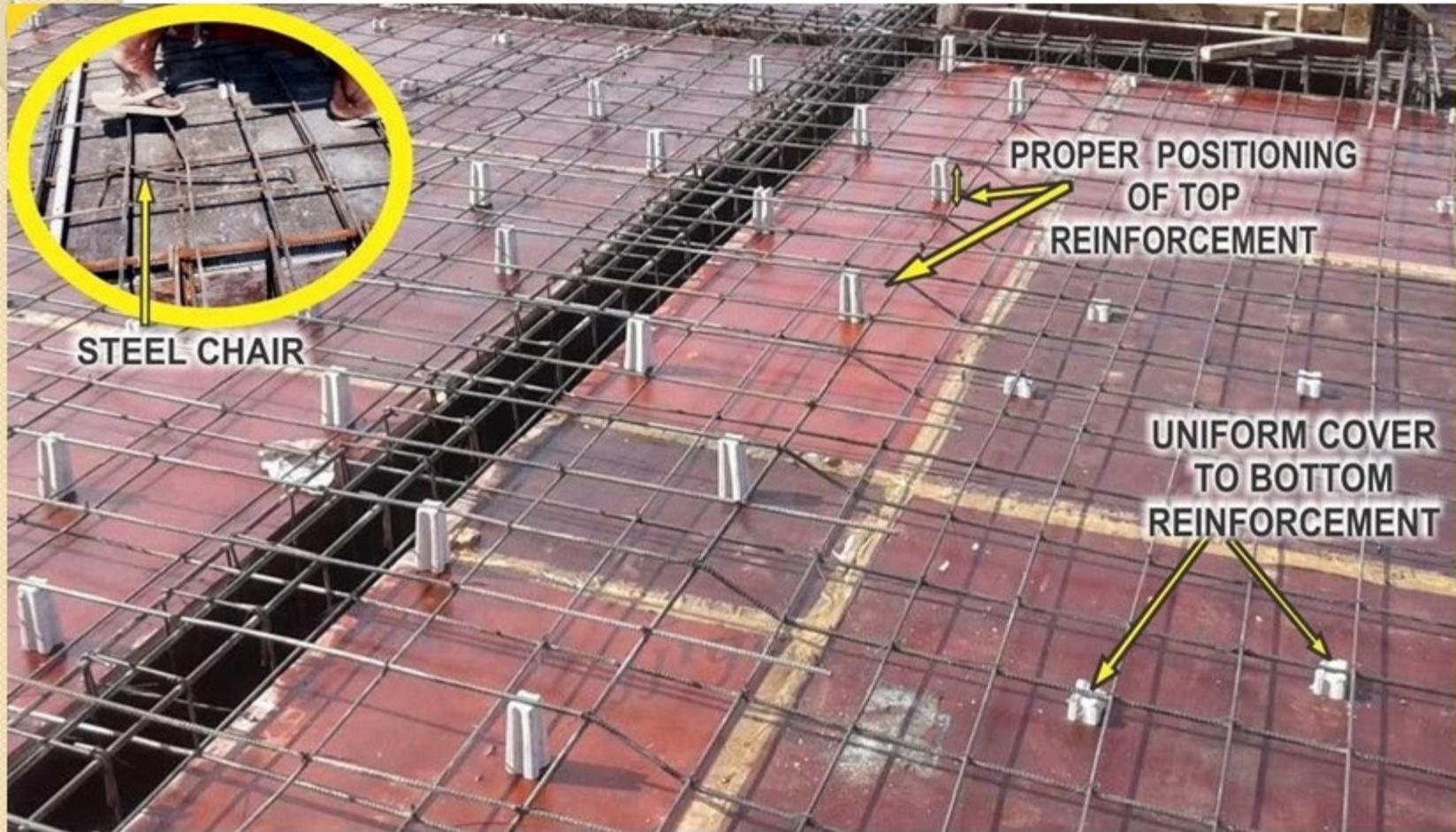
# Reackon cover block

Reackon cover block is a multidimensional concrete cover block which is used to ensure the Perfect clear cover to rebar in concrete structure.





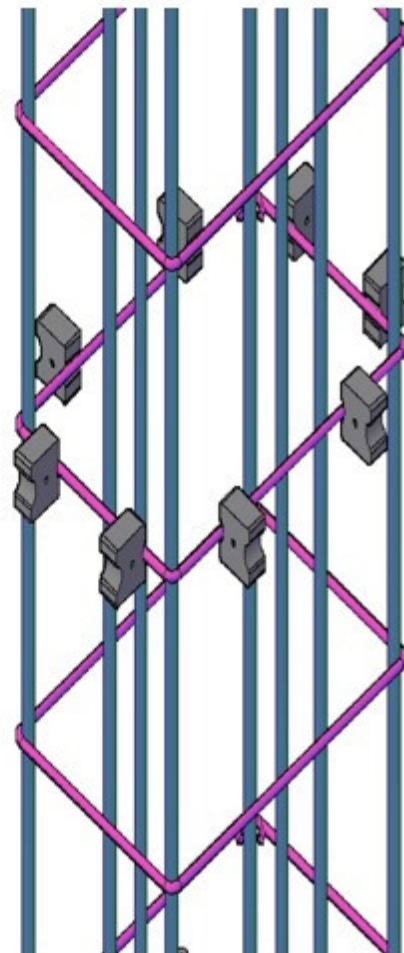
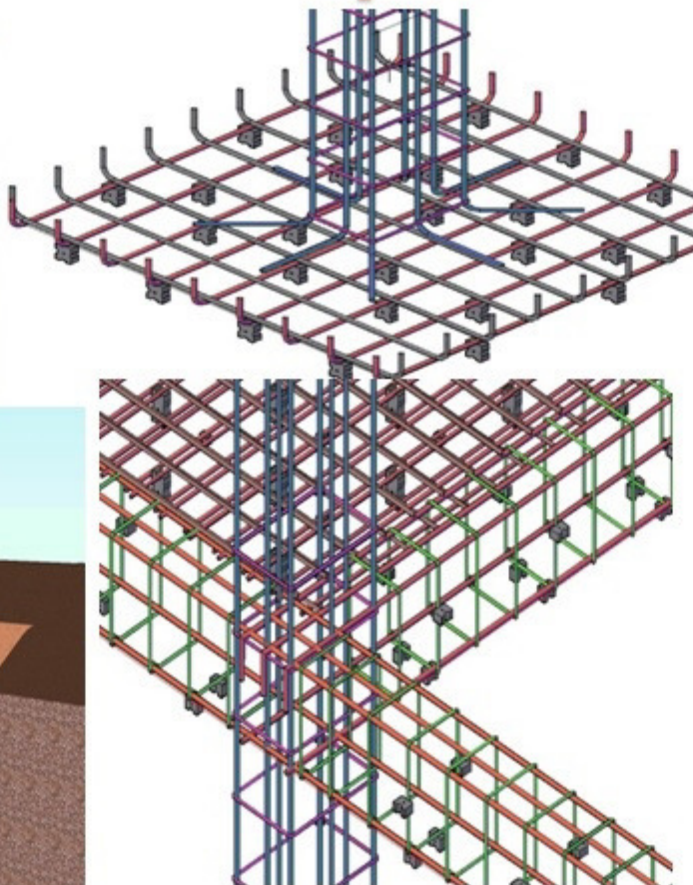
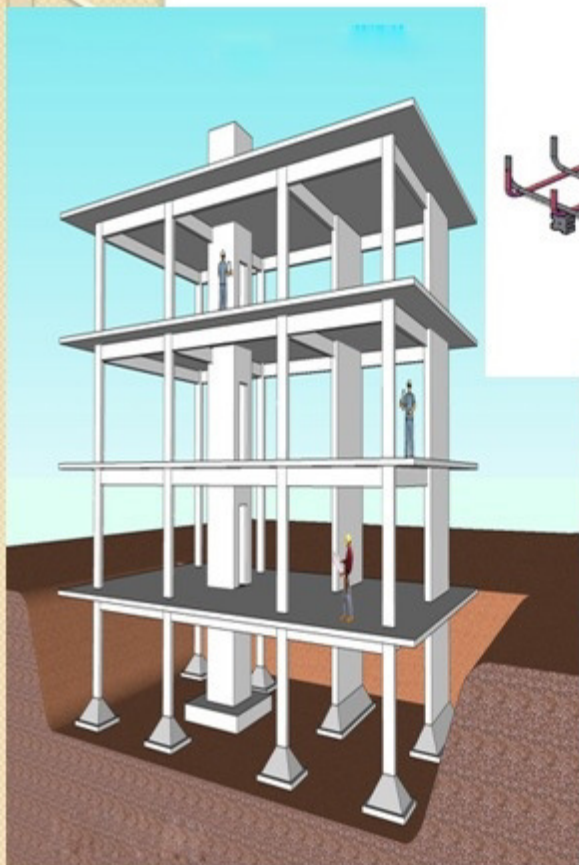
# REACKON MULTIPLE COVER BLOCK at site



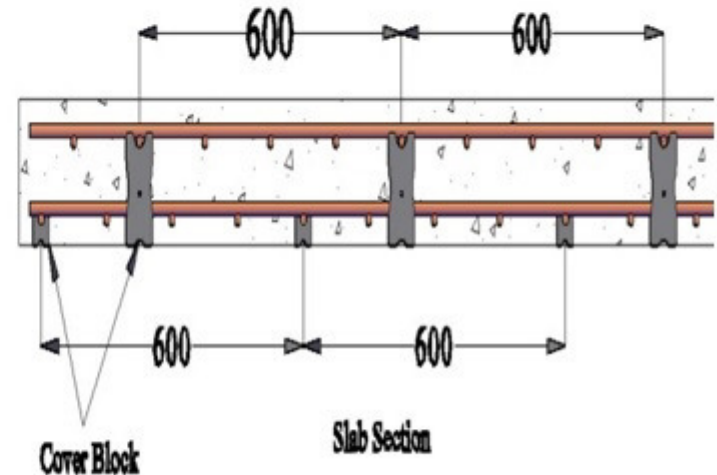
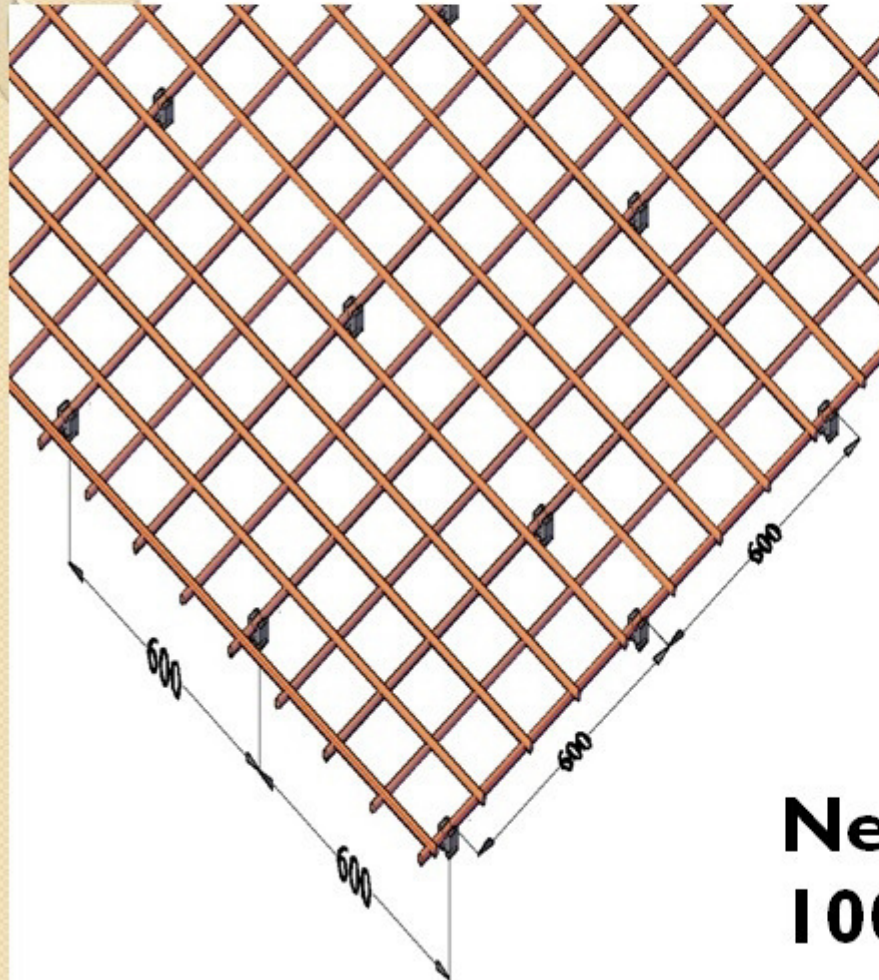
Spacers are most Effective, Strudy and Stable to position the reinforcement and 100% Economical too.



# Section view with REACKON Cover Block & Spacers



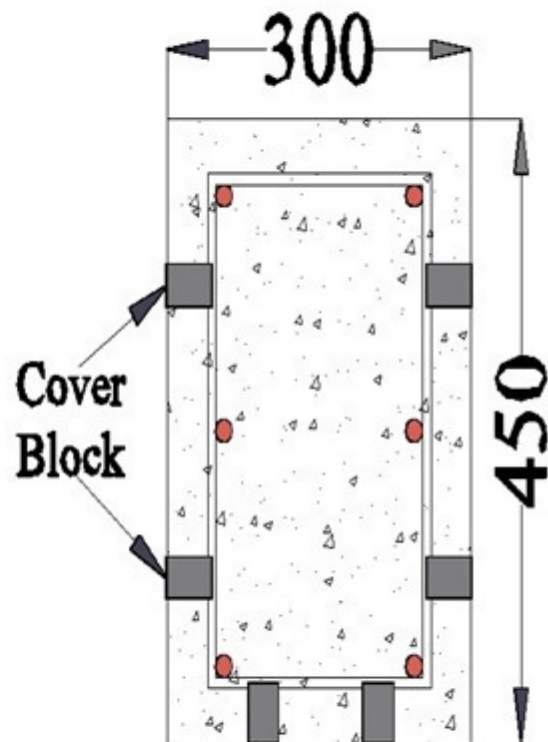
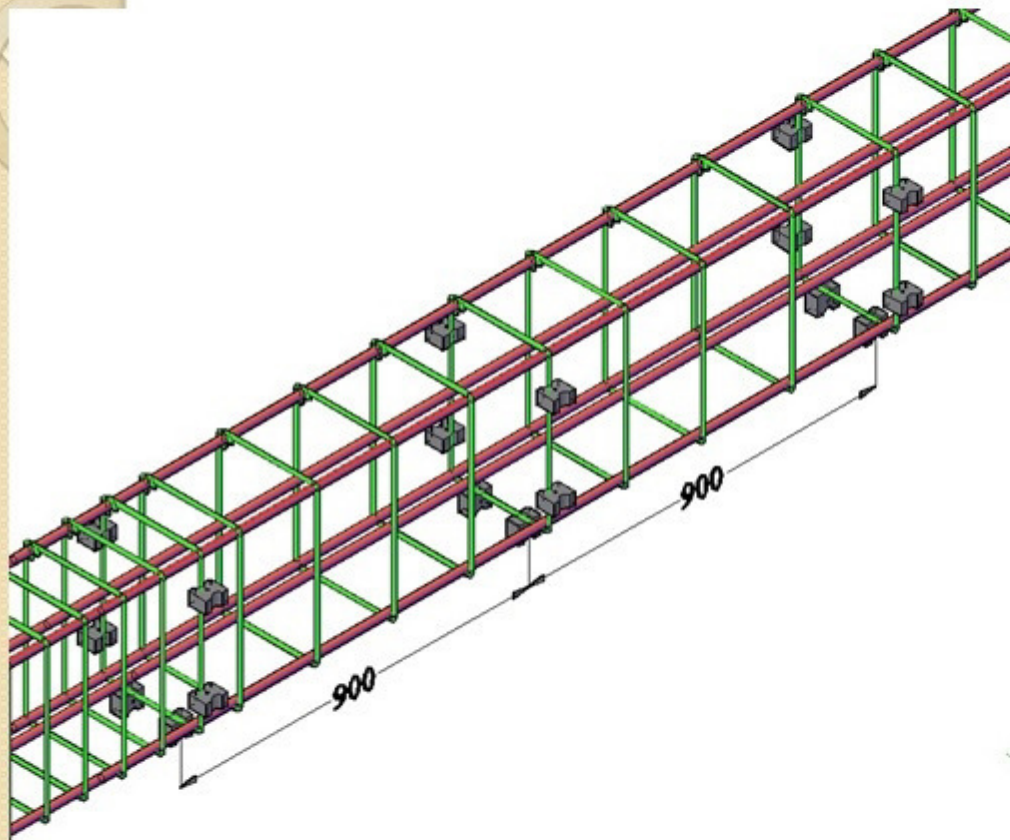
# Calculation for Slab



**Need Only 40-60 Pcs per  
100 sft Slab Casting**



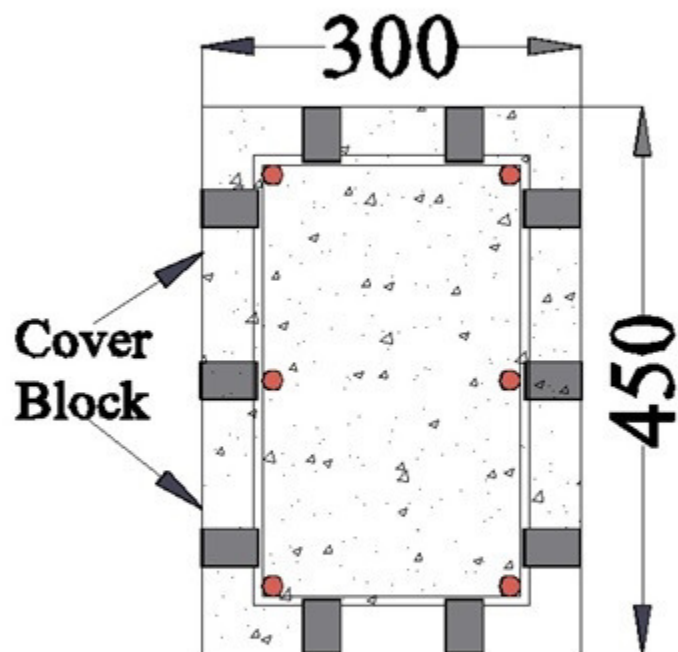
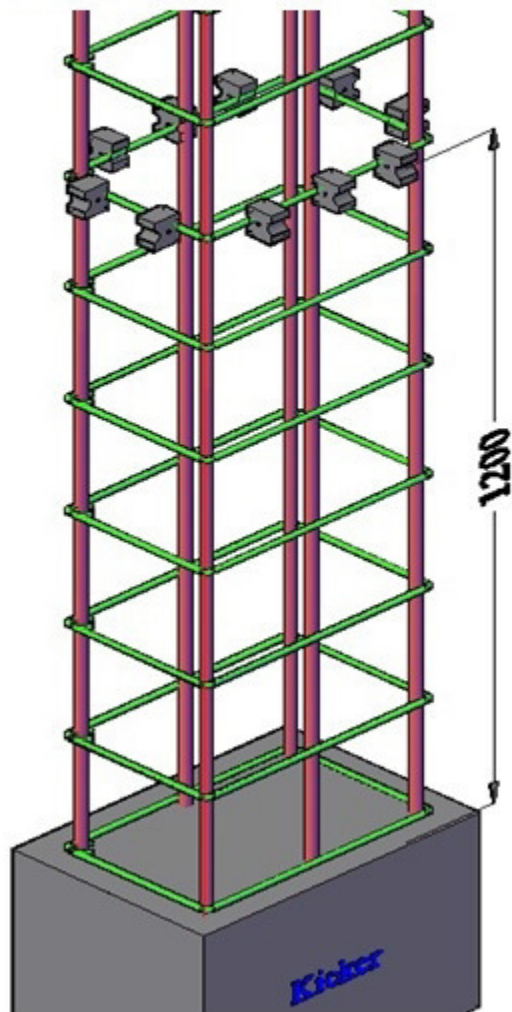
# Calculation for BEAM



**Beam Section**

**Need Only 6-10 Pcs per 3 rft**

# Calculation for COLUMN Need



Column Section

Need Only 16-24 pcs per  
10 rft Column

## PRICE LIST

PRODUCT ID	PRODUCT NAME		APPLICATION	QUANTITY PER BOX	PRICE PER BOX
	<b>MULTIDIMENSIONAL Cover Block (20, 25, 40, 50 mm)</b>		<b>SLAB BEAM COLUMN FOOTING</b>	<b>150 Nos. PER BOX</b>	
	<b>Cover Block (30, 40 mm)</b>		<b>BEAM COLUMN</b>	<b>150 Nos. PER BOX</b>	
	<b>Cover Block (20, 25 mm)</b>		<b>SLAB BEAM</b>	<b>150 Nos. PER BOX</b>	
	<b>Cover Block (50, 65, 75 mm)</b>		<b>FOOTING BEAM</b>	<b>36 Nos.</b>	
	<b>Cover Block (40,50 mm)</b>			<b>96 Nos.</b>	
	<b>Cover Block</b>	<b>25 / 30 mm</b>	<b>COLUMNS PILES VERTICAL RCC MEMBER</b>	<b>48 Nos.</b>	
		<b>40 mm</b>		<b>56 Nos.</b>	
		<b>50 mm</b>		<b>30 Nos.</b>	
		<b>75 mm</b>		<b>1 Nos.</b>	
	<b>SPACERS</b>	<b>75 mm</b>	<b>REPLACEMENT OF STEEL CHAIR USED IN SLABS BELOW TOP BAR</b>	<b>84 Nos.</b>	
		<b>100 mm</b>		<b>84 Nos.</b>	
		<b>125 mm</b>		<b>42 Nos.</b>	
	<b>KANDA HORIZONTAL SPACERS</b>	<b>75 / 100 125 / 150 175 / 200 225 / 250 300 mm</b>	<b>KANDA ARE USED TO MAINTAIN PROPER SPACING IN VERTICLES REINFORCEMENT AND SHUTTERING PANELS</b>		



**FOR EASY HANDLING COVER BLOCKS ARE PACKED IN  
LAMINATED CORRUGATED BOX**

**Authorized  
Stockiest**



# OUR Products

- Ready Mix Concrete (RMC)
- Fiber Reinforce Concrete
- Precast Concrete Product
- Concrete Door Frame
- Ventilators
- Precast Compound wall
- Interlocking Paving Blocks & Tiles
- Cover Blocks
- Drain Cover / Man Hole Cover
- Fiber Reinforced Jali